



CONSORTIUM  
PROCUREMENT  
CONSTRUCTION

# MULTI-DISCIPLINARY CONSULTANCY SERVICES

11TH JANUARY 2022 - 10TH JANUARY 2028



MDC1 FRAMEWORK GUIDE



## WHY HAS THIS FRAMEWORK BEEN DEVELOPED

This framework has been developed to provide an efficient, value for money procurement route for local authorities; registered social landlords; councils, boards, and trusts, and other public sector bodies seeking a comprehensive range of high-quality consultancy services across multiple disciplines.

### Key benefits - at a glance:

- ✓ Higher service standards through access to innovative companies of varying sizes, who are experts in collaboration
- ✓ Greater customer service by focussing on collaboration and social value
- ✓ A diverse supply base that reflects the London & SE communities we serve
- ✓ A sustainable supply base due to the flexible structure and 6 year term of the framework

Suitable for public sector refurbishment and new build projects of all sizes, it will enable organisations to access high quality pre-approved suppliers of all sizes who can deliver projects across a range of public buildings including:

- > Publicly funded schools, universities, and colleges
- > NHS healthcare buildings
- > Fire, ambulance, and police stations
- > Other public buildings and associated works
- > Residential properties (when part of a mixed-use development)
- > Student accommodation
- > Commercial to residential conversions
- > Community buildings
- > Public offices

### LHC Lifetime Values

In addition to providing our partners with competitively tendered Framework Agreements for building works, goods, and services CPC is committed to delivering tangible social value and community benefits that meet local and regional needs. CPC work with our partners and appointed companies to ensure that wherever possible projects delivered using our Frameworks leave a social legacy.

CPC has aligned its activities to create the LHC Lifetime Values, which uses the four key value categories as identified in the value toolkit by the Construction Innovation Hub (CIH). CIH has been established by Government to progress innovation in the construction sector.

During the life of the Framework CPC will work with partners and appointed companies to promote, identify, implement, and monitor the impact of these value categories, which could be supported by social value and community benefit initiatives alongside the delivery of the works or service contracts in meeting local/regional needs.



CPC was created out of a long-running partnership between the Northern Housing Consortium and LHC, born out of each organisation's passion to improve standards of homes and buildings, delivering real social value to our local communities, through excellence in procurement.

Working together we now offer advice, support and guidance to all public sector organisations across the North and the Midlands providing access to LHC's suite

of framework solutions, which are built on more than 50 years of public sector construction procurement expertise and knowhow. This means no matter how large or small your scope of work requirements are, you will have peace of mind that our extensive range of pre-approved suppliers will deliver your project on time, on budget and to the agreed quality standards.

### Consortium Procurement Construction (CPC)

Leeds Office | Office 34, Pure Offices | Turnberry Park Road | Morley, Leeds | LS27 7LE

☎ 0113 350 8907

✉ info@cpconstruction.org.uk

🐦 @CPC\_Procure

🌐 Consortium Procurement Construction



# ABOUT THE FRAMEWORK

The Multi-Disciplinary Consultancy Services Framework is the first framework of its kind to have been provided by CPC.

The tender was carried out in strict accordance with the EU Procurement Directive and UK public sector procurement rules. Places on the framework were awarded to 77 different suppliers in 12 workstreams. The companies appointed to the framework are registered, qualified organisations with a track record in public sector.

The term of the framework is from **11th January 2022 – 10th January 2028**. However, individual call off projects can be completed beyond the six-year duration of the framework as long as a contract is in place prior to the framework expiry date.

## Our vision for the framework

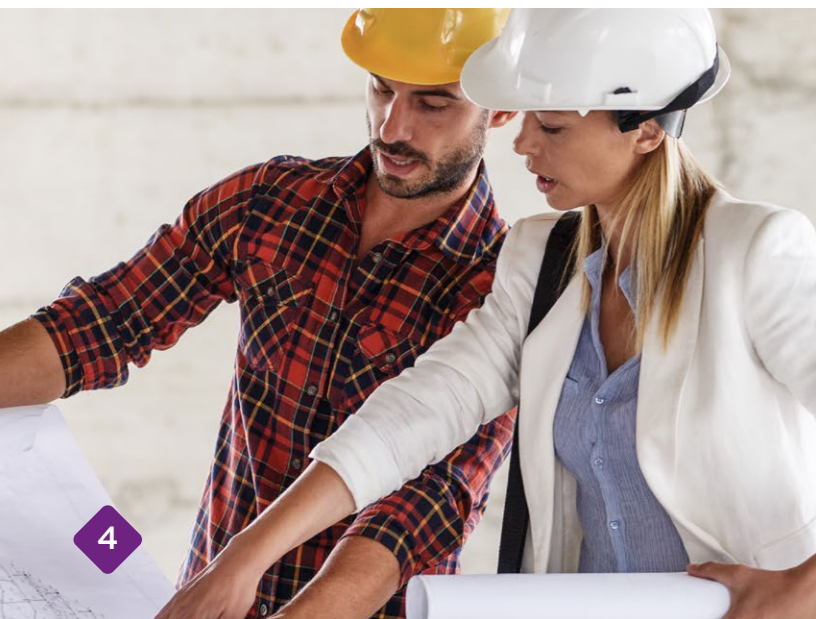
The MDC1 framework has been created to help organisations build capacity strength and provide a comprehensive range of high-quality consultancy services across multiple disciplines to the public sector.

Following client feedback on the restrictive nature of value bands, combined with the vision to remove barriers for SMEs, this framework has been designed to be open and transparent.

Value bands have been removed which means full visibility of work to any company within a discipline, and the ability to apply for any call-off. The transparency and ethos of the framework encourages micro-SMEs to collaborate or partner with larger companies to bid, which in turn encourages growth through the six year life of the framework, making it more sustainable in the long term.

Our Client Support Managers and Technical Managers will be on hand to provide guidance around how to short-list applicants if a smaller list of bidders is required.

Aimed at projects of all sizes to meet client need and truly reflect the current market, it will also help organisations to offer something more through the evaluation of bidders' focus on EDI and customer service.



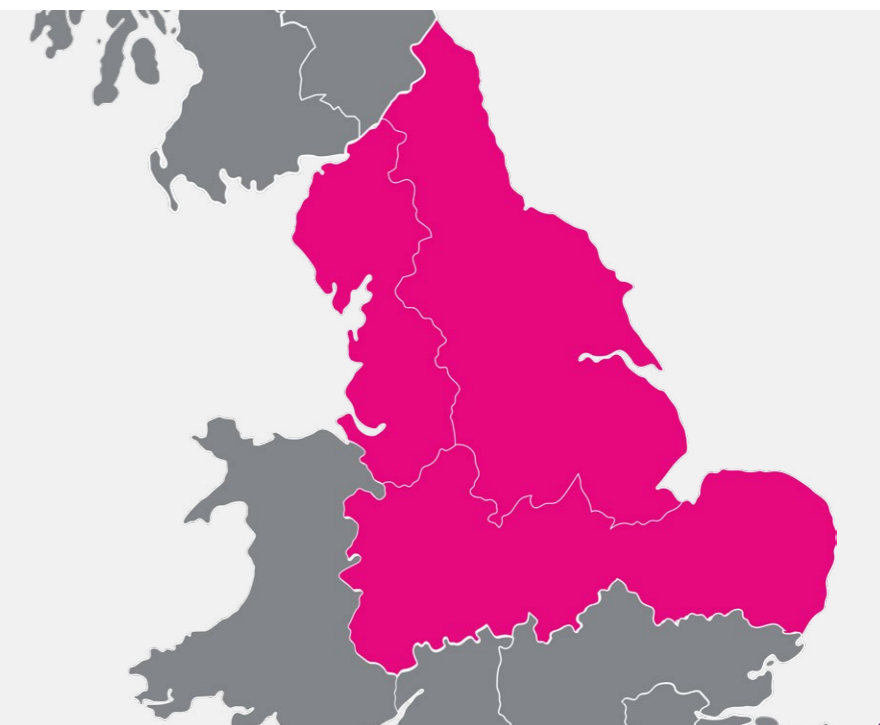
“Our vision is to provide the most realistic and effective solutions in public sector procurement whilst driving equal opportunity, reducing barriers to entry for smaller businesses, and appointing companies with diverse leadership and workforces that reflect the regions and communities that the framework will serve.”

# WORKSTREAM OPTIONS

We have developed 12 workstreams reflecting 11 individual disciplines alongside one multi-discipline workstream to cater for the different types of consultancy services available across the public sector. The workstreams are as follows:

<b>Workstream 1: Architects (excluding London)</b>	<b>Workstream 2: Building Services Engineers</b>
<b>Workstream 3: Building Surveyors</b>	<b>Workstream 4: Clerk of Works</b>
<b>Workstream 5: Quantity Surveyors</b>	<b>Workstream 6: Employers Agents</b>
<b>Workstream 7: Planning Consultants</b>	<b>Workstream 8: Principal Designers</b>
<b>Workstream 9: Project Managers</b>	<b>Workstream 10: Structural Engineers</b>
<b>Workstream 11: Civil Engineers</b>	<b>Workstream 12: Multi-Discipline Services (covers all workstreams)</b>

This framework was established to cover the whole of the CPC operating region across the North and Central England



# APPOINTED COMPANIES NORTH & CENTRAL ENGLAND

The following 114 companies have been appointed to MDC1 after successfully completing the two-stage application and tendering process:



Workstream 1 - Architects (excluding London)		
Micro-Enterprise	Small Enterprise	Medium+ Enterprise
Architecture00	Austin-Smith:Lord	Allies Morrison
Daykin Marshall Studio	Avanti Architects	Baily Garner
KAEBCA	DSDHA	BPTW
Moll Architects & Catja de Haas Architects	GSSArchitecture	Haworth Tompkins
TOCA	Metropolitan Workshop	Jestico + Whiles + Associates
Wren Architecture & Design	Rock Townsend	Levitt Bernstein Associates

Workstream 2 - Building Services Engineers	
Small Enterprise	Medium+ Enterprise
Butler & Young Associates	BDP
Malachy Walsh & Partners	Buro Happold
Method Consulting	Clancy Consulting
PinnacleESP	Couch Perry Wilkes
--	Desco (Design & Consultancy)
--	Stantec UK

Workstream 3 - Building Surveyors		
Micro-Enterprise	Small Enterprise	Medium+ Enterprise
Elvet Construction Surveyors	Arcus Consulting	AHR Building Consultancy
--	Daniel Connal	Baily Garner
--	PinnacleESP	Currie & Brown UK
--	Richard Jackson	Rapleys
--	Storm Tempest	Stace
--	--	Watts Group

Workstream 4 - Clerk of Works		
Micro-Enterprise	Small Enterprise	Medium+ Enterprise
Elvet Construction Surveyors	Hickton Consultants	Baily Garner
--	RG+P	Currie & Brown UK
--	--	--
--	--	--
--	--	--
--	--	--

Workstream 5 - Quantity Surveyors		
Micro-Enterprise	Small Enterprise	Medium+ Enterprise
DMR Surveyors	Daniel Connal	Faithful+Gould
Elvet Construction Surveyors	GSSArchitecture	Stace
JPN Projects	MESH Construction Consultancy	Summers Inman Construction and Property Consultants
Marstan BDB	Pulse Associates	Ward Williams Associates
--	RG+P	WT Partnership

Workstream 6 - Employers Agents		
Micro-Enterprise	Small Enterprise	Medium+ Enterprise
JPN Projects	Arcus Consulting	Baily Garner
Marstan BDB	MESH Construction Consultancy	Currie & Brown UK
TOCA	Pulse Associates	Michael Dyson Associates
--	RG+P	Summers Inman Construction and Property Consultants
--	--	Watts Group
--	--	WT Partnership

Workstream 7 - Planning Consultants		
Micro-Enterprise	Small Enterprise	Medium+ Enterprise
TOCA and NTA Planning	Caulmert	HKS Architects
--	--	Montagu Evans
--	--	Quod
--	--	Stantec UK
--	--	Turley

Workstream 8 - Principal Designers		
Micro-Enterprise	Small Enterprise	Medium+ Enterprise
Pierce Hill Project Services	Glancy Nicholls Architects	AHR Building Consultancy
Safety Advisors	Storm Tempest	Summers Inman Construction and Property Consultants
--	--	Watts Group
--	--	WT Partnership
--	--	--

\*LISTED ALPHABETICALLY

\*LISTED ALPHABETICALLY



# APPOINTED COMPANIES NORTH & CENTRAL ENGLAND

Workstream 9 - Project Managers		
Micro-Enterprise	Small Enterprise	Medium+ Enterprise
Starris Projects	Daniel Connal	AHR Building Consultancy
TOCA	GSSArchitecture	Faithful+Gould
--	Pulse Associates	HKS Architects
--	--	Stace
--	--	Ward Williams Associates
--	--	--

Workstream 10 - Structural Engineers		
Micro-Enterprise	Small Enterprise	Medium+ Enterprise
MPN UK	Egniol Consulting	BDP
--	HBL Associates	Buro Happold
--	Malachy Walsh & Partners	ByrneLooby Partners
--	Richard Jackson	Clancy Consulting
--	Structa	Curtins Consulting
--	--	Perega

Workstream 11 - Civil Engineers	
Small Enterprise	Medium+ Enterprise
Egniol Consulting	ByrneLooby Partners
Malachy Walsh & Partners	Clancy Consulting
Richard Jackson	Curtins Consulting
Structa	Perega
--	Price & Myers
--	--

Workstream 12 - Multi-Discipline Services	
Small Enterprise	Medium+ Enterprise
ADP Architecture	calfordseaden
Aura Newcastle	Kier Business Services
ECD Architects	McBains
Fraser Brown MacKenna Architects	Pick Everard
--	Ridge and Partners
--	Turner & Townsend

\*LISTED ALPHABETICALLY

# EVALUATION CRITERIA

The process involved a two-stage Restricted Tender that started with a qualification assessment. Shortlisted tenderers were then invited to submit an Invitation To Tender (ITT).

## Accreditations and certifications

Each bidder was asked to demonstrate that they were suitably registered and had the necessary skills, expertise, and qualifications needed, alongside the health and safety, environmental, equality and quality ISO certifications (or equivalent) in place to be appointed to this framework. Many of our appointments are BIM Ready or working towards this.

Financial due diligence - applicants were assessed on their turnover and checked via Credit Safe. The results of this check were assessed on a pass/fail basis.

## ITT award assessment

Following the qualification stage, the ITT award evaluation process comprised a quality/price criterion, with the sum of both scores establishing the Most Economically Advantageous Tenders (MEAT).

## Award weighting criteria

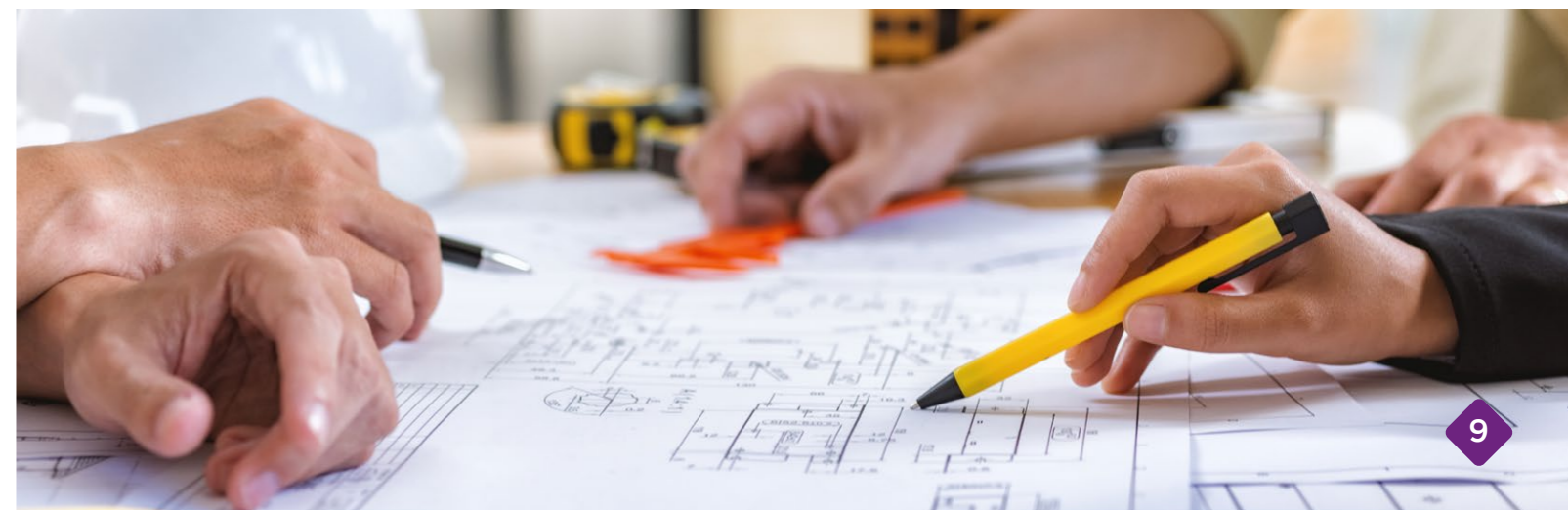
The tenders were evaluated on a **70% quality** and **30% price** split using 'deviation from mean' formulas instead of the usual best price rank. This was to make the framework as balanced as possible and even the playing field for micro-SMEs, small enterprises, and medium to large companies.

### Quality assessment - 70% weighting

The quality element was assessed based on the applicants' written responses to a range of technical questions, with bidders evaluated based on scenarios reflecting real life situations that clients would encounter. These assessed areas such as customer service, site and procurement risk, and flexibility and sensitivity to differing needs, such as EDI matters.

### Price assessment - 30% weighting

The pricing element of the evaluation process accounted for 30% of the overall score. Applicants could apply a regional uplift to their prices and all submissions provided price scores per workstream.



# CALL-OFF ADWARD OPTIONS

The Framework allows clients the option of:

**Direct award** without further competition, where all terms and conditions of the call-off project are within the terms and conditions of the framework

OR

**Mini-competition**, where terms and conditions of the call-off may vary or be modified from the framework or at the choice of the client.

When calling off projects, clients can use any one of a range of standard forms of building contract including JCT/SBCC, NEC/NEC4, ACE, PPC, TPC, FAC1, or their own in-house agreement.

## Eligibility

CPC is a not-for-profit organisation, governed by public law and a central purchasing body providing procurement services. Over 200 publicly funded organisations throughout England use CPC frameworks to procure works, goods and services to: construct, refurbish and maintain social housing, schools and public buildings. These include:

- > Local Authorities and any subsidiaries and joint-venture vehicles of those Local Authorities.
- > Registered Social Landlords (RSL), Tenant Management Organisations (TMOs) & Arm's Length Management Organisations (ALMOs)
- > Registered Charities
- > Publicly Funded Schools
- > Universities and Further Education Establishments
- > Colleges
- > Police Forces
- > Fire and Rescue services
- > Health Authorities, Councils, Boards and Trusts

Details of those contracting authorities identified are listed at [www.cpconstruction.org.uk/who-we-work-with/](http://www.cpconstruction.org.uk/who-we-work-with/)

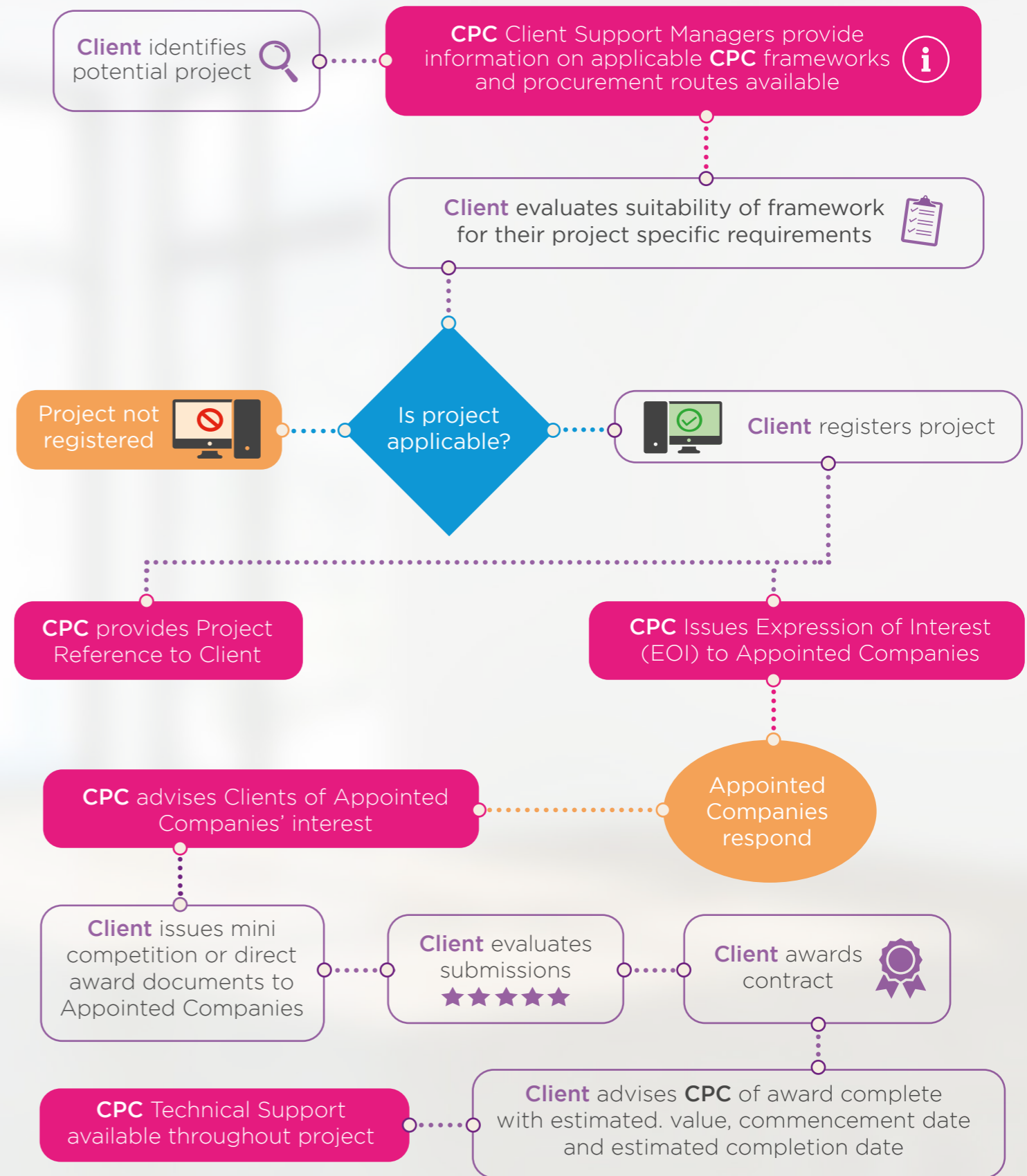
## Accessing the Framework

Companies appointed to CPC frameworks are required to pay a small percentage ('the levy') of the total value of every invoice submitted to clients and to submit quotations to clients that are inclusive of the levy. There are no access fees in order to browse our frameworks. As a not-for-profit organisation, CPC returns surplus levy income to our clients to support social value initiatives in the local communities they serve.

## General Terms and Conditions


LHC uses the FAC-1 standard form of contract to manage our frameworks. The LHC pro forma, which should be read in conjunction with the FAC-1 in published form, details the terms and conditions that govern the operation of the framework, including the procedures to call off projects under the framework. A free copy of the LHC proforma is available upon request. The FAC-1 in standard published form can be purchased at a negotiated rate from ACA, by emailing [office@acarchitects.co.uk](mailto:office@acarchitects.co.uk) and quoting discount code reference: LHCFAC2516102017.

# THE PROCESS OF USING OUR FRAMEWORK





CONSORTIUM  
PROCUREMENT  
CONSTRUCTION

 0113 3508 907

 [www.cpconstruction.org.uk](http://www.cpconstruction.org.uk)

 [info@cpconstruction.org.uk](mailto:info@cpconstruction.org.uk)

 @CPC\_Procure

 Consortium Procurement Construction

A partnership between

**LHC**

Trusted procurement for  
better buildings and homes

 **NORTHERN  
HOUSING  
CONSORTIUM**  
VOICE OF THE NORTH